

Your Partner in Innovation



Innovation

EnexTechnologies stands at the forefront of this challenge, offering **cutting-edge** cooling technologies that are both **effective** and **environmentally friendly**.



Supporting Energy Transition

Our commitment to sustainability is evident in our products designed to support TLCs in their energy transition journey, reducing carbon footprints while enhancing efficiency and data safety.



Environmentally Innovative Solutions

We specialize in developing solutions that not only meet the current demands of IT cooling but also anticipate future trends, ensuring your data center is prepared for the evolution of technology.



A Commitment to Green Technology

With EnexTechnologies, embrace a partnership that values innovation and environmental responsibility, paving the way for a greener, more sustainable future in data center operations.

Innovative & Efficient Solutions

FOR DATA CENTRE

info@enextechnologies.com
enextechnologies.com

The Future of Data Center Cooling

As the digital world expands, so does the need for robust IT cooling solutions to manage the heat generated by data centers.

Chillers



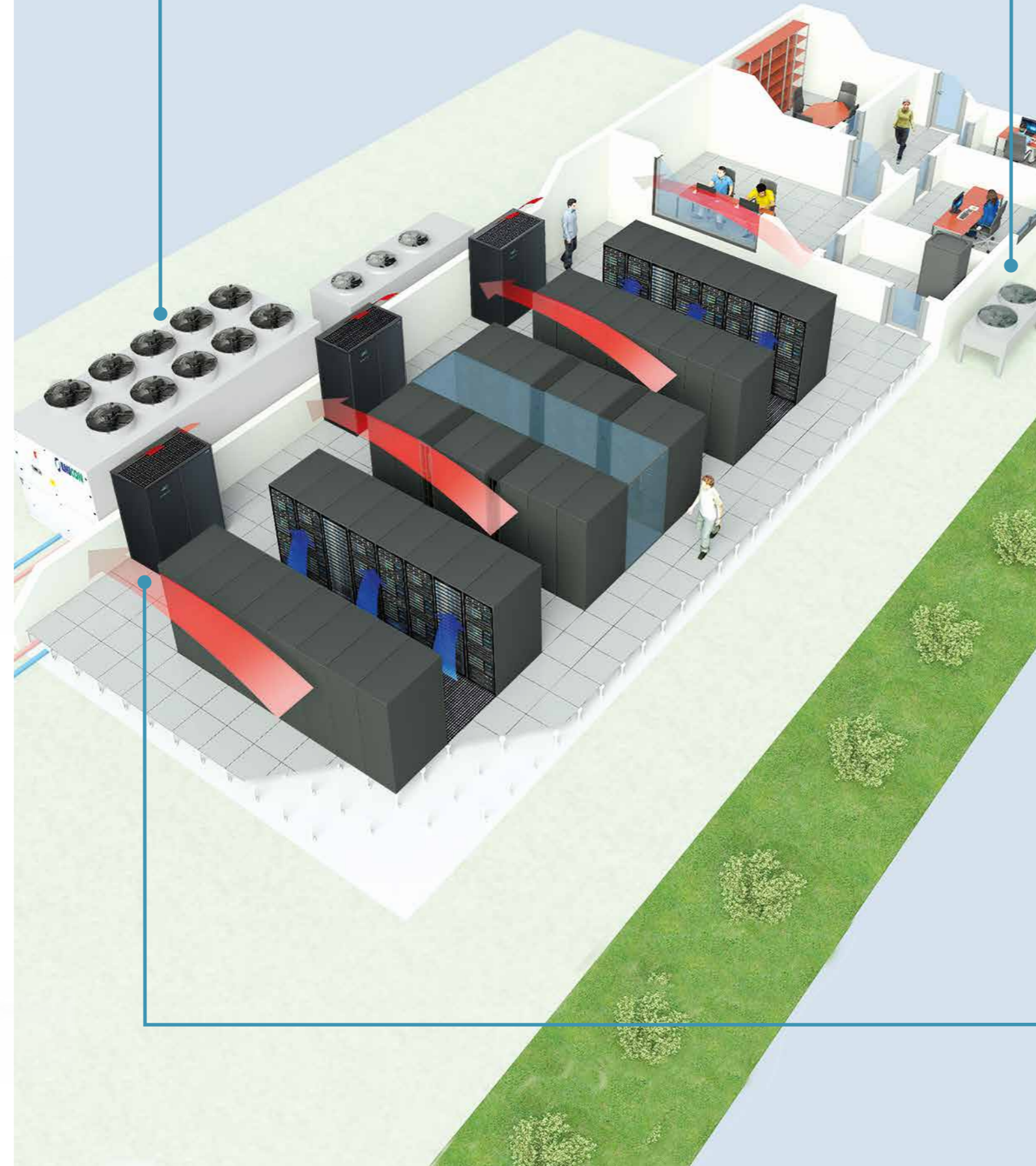
AIR COOLED CHILLERS WITH INTEGRATED FREE COOLING
for outdoor installation
RAH F Serie
Cooling capacity from 338 kW to 1586 kW

AIR COOLED CHILLERS FOR OUTDOOR INSTALLATION
equipped with inverter screw compressors, axial fans and microchannel condensing coils
RAH MC VS Serie
Cooling capacity from 306 kW to 1555 kW



WATER COOLED CHILLERS WATER CONDENSED
for indoor installation
RWH Serie
Cooling capacity from 269 kW to 2020 kW

AMMONIA PACKAGED AIR-COOLED SCREW CHILLER
outdoor installation for high cooling capacities
ORCA Serie
Cooling capacity from 200 kW to 2500 kW



Heat Exchangers



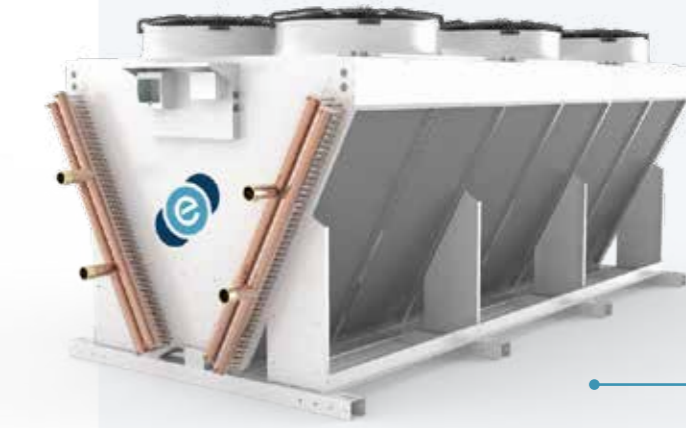
DIRECT EXPANSION CLOSE CONTROL UNIT
air-condensed with on/off compressor
DX Serie
Cooling capacity from 6 kW to 125 kW

DIRECT EXPANSION INVERTER CLOSE CONTROL UNIT
air-condensed with inverter compressor
DXi Serie
Cooling capacity from 7 kW to 120 kW



DIRECT EXPANSION CLOSE CONTROL UNIT FOR HIGH DENSITY RACKS
30 - 60 cm
InRow Serie
Cooling capacity from 12 kW to 70 kW

WATER COOLED CLOSE CONTROL UNIT (extended version)
WU-WUL Serie
Cooling capacity from 6 kW to 216 kW



CHOICE
by enex technologies
cooling and heating naturally

V-SHAPED DRY COOLER
V-shaped dry coolers with axial fans for outdoor use

Cooling capacity from 90 kW to 1200 kW

CHOICE
by enex technologies
cooling and heating naturally

FLAT DRY COOLER
Flat dry coolers with axial fans for outdoor use

Cooling capacity from 7 kW to 630 kW



REMOTE UNIT FOR WATER COOLED CLOSE CONTROL
for high density racks
RCE Serie

Close control units